

AGENDA

**SAN LEANDRO CITY COUNCIL,
SAN LEANDRO UNIFIED SCHOOL DISTRICT BOARD OF TRUSTEES, AND
SAN LORENZO UNIFIED SCHOOL DISTRICT BOARD OF TRUSTEES
JOINT WORK SESSION**

APRIL 23, 2018

**Main Library
300 Estudillo Avenue
San Leandro, California**

**6:15-7:00 P.M. – Estudillo Room
INFORMAL GATHERING OF CITY COUNCIL AND BOARD MEMBERS**

Gathering is open to the public. Light dinner will be provided to City Council and Board members, and assigned staff only.

**7:00 P.M. – Dave Karp Room
JOINT WORK SESSION**

1. CALL TO ORDER

A. Pledge of Allegiance to the Flag

B. Roll Call

San Leandro City Council

Council Members Ballew, Cox, Hernandez, Lee, Lopez, Thomas; Mayor Cutter

San Leandro Unified School District

Board Members Aguilar, Gonzalez, James, Oshinski, Prola, Sheridan, President Tate

Student Board Member Dazo

San Lorenzo Unified School District

Board Members Medina, Peck, Sinegal, Stewart; President Zamudio

Student Member Aguilar

C. Announcements

2. WORK SESSION

A. Introductions and Welcome

- Mayor Cutter
- President Tate
- President Zamudio

San Leandro City Council, San Leandro Unified School District Board of Trustees, and San Lorenzo Unified School District Board of Trustees Joint Work Session

April 25, 2017

B. Work-Based Study Programs Presentations

1. City of San Leandro Workforce Incubator Challenge
2. San Leandro Unified School District *CareerForce* Development
3. San Lorenzo Unified School District Workforce Development

C. Partner Updates

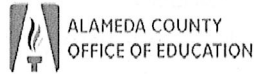
D. Host Agency for Next Year's Meeting – San Leandro Unified School District

3. PUBLIC COMMENTS

Public Comments are limited to 3 minutes per person. The public is invited to make any comments related to Agenda items, or other items of public interest, at this time.

4. MEMBER COMMENTS

5. ADJOURN



**PilotCity / City of San Leandro / Alameda County
Office of Education
Workforce Incubator Challenge**



Joint worksession, SLUSD/SLzUSD/San Leandro City Council
April 23, 2018



DIVERSE CIVIC ENGAGEMENT

Conceptualize a civic engagement program that sources and addresses the deep rooted issues of our diverse community in San Leandro



GO GREEN SAN LEANDRO

Conceptualize a campaign and program that challenges San Leandro households to compete in sustainability initiatives leveraging the gogreensanleandro.com website



DAILY LIFE AUTOMATION

Conceptualize an automated task using a robotic arm that makes your daily life more productive, effective and efficient.



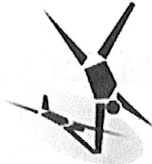
SMART CAMPUS

Conceptualize a data dashboard of Internet of Things (IoT) sensors for your school campus that moves it closer towards a zero net energy campus.



San Leandro High School

- » 10th-12th grade Environmental Science classes
- » Approximately 150 students



East Bay Arts High School

- » 10th grade Carbon Footprint Project
- » Approximately 55 students




Example Challenge

Challenge Name & Prompt
One sentence prompt

Context
Description and contextualization of the challenge problem

Parameters
Requirements and deliverables of solution

Get Started Folder
Resources and materials to help you complete



City of San Leandro Sustainability Division

GO GREEN SAN LEANDRO

Prototype a community-wide campaign leveraging the GoGreenSL.org website platform to reduce our overall impact on the climate while benefiting the community.

CHALLENGE CONTEXT

Climate change is a global problem and we all need to work together to reduce our energy use, prepare for climate impacts, and find sustainable solutions for our health and wellbeing. San Leandro is discovering innovative ways to bring clean energy, alternative fuels, and smart technology to the city, but the path to a healthier future starts at home. The City is launching a web-based energy challenge GoGreens. The platform engages households to take actions and creates friendly competition by enabling people to earn points on behalf of schools and community organizations. The mission is to launch a community-wide virtual campaign leveraging this web-based energy challenge—starting with your neighborhoods—to reduce our impact on the climate while benefiting the community.

PARAMETERS

- Conceive** - Develop your solution in a web-based campaign and make it ready for launch.
- Use** - Create your solution designed for your user audience.
- Prototype** - Prototype a community-wide campaign.
- Website** - Use the GoGreenSL.org website as the center of your solution.
- Incentive** - Design an incentive for your campaign.
- Language** - Consider creating multilingual language in your campaign to reach and recruit non-english speakers.

PROJECT CHECKLIST

BY KICK OFF (Project concept presentation activity)

- Teacher for the activity (student factors in a project challenge)
- Technology setup in classroom and ready for use

BY REVIEW DAY (Project feedback and advisory)

- Review business model canvas with employer
- All project stakeholders in progress
- Complete all user research, storyboard and design
- Advisory and feedback obtained by teacher and peers
- Checksum prepared for employer to advance project

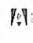
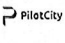
BY DEMO DAY (Project prototype demonstration presentation)

- Prototype ready for demonstration to employer
- Presentation deck prepared and ready for action
- Project finalized based on user feedback and advisory

ADVISOR INFORMATION

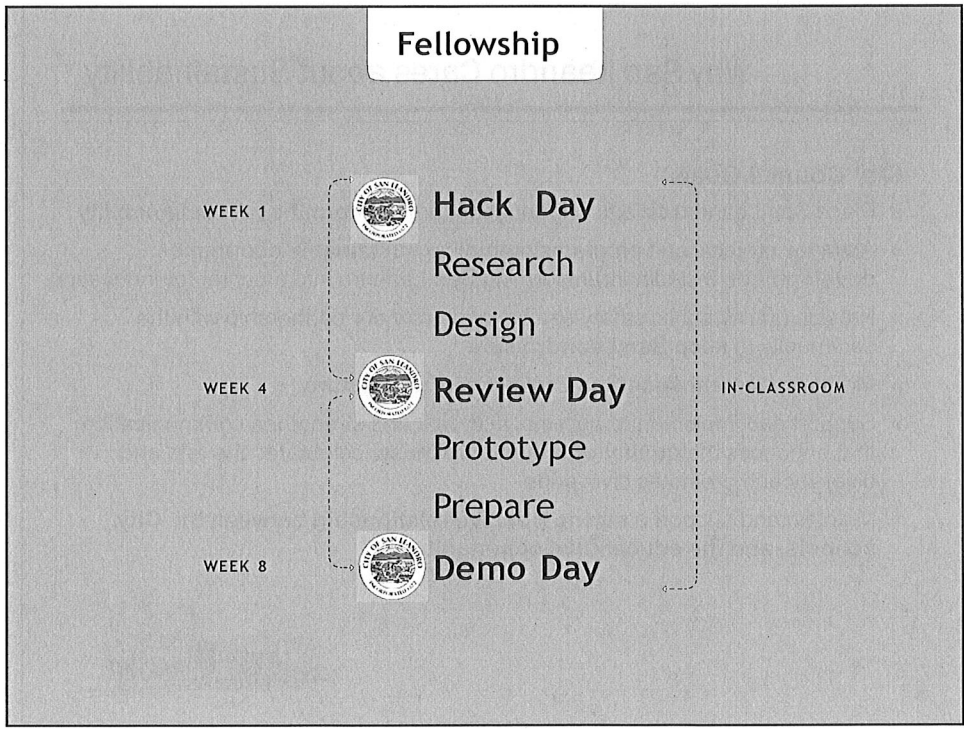
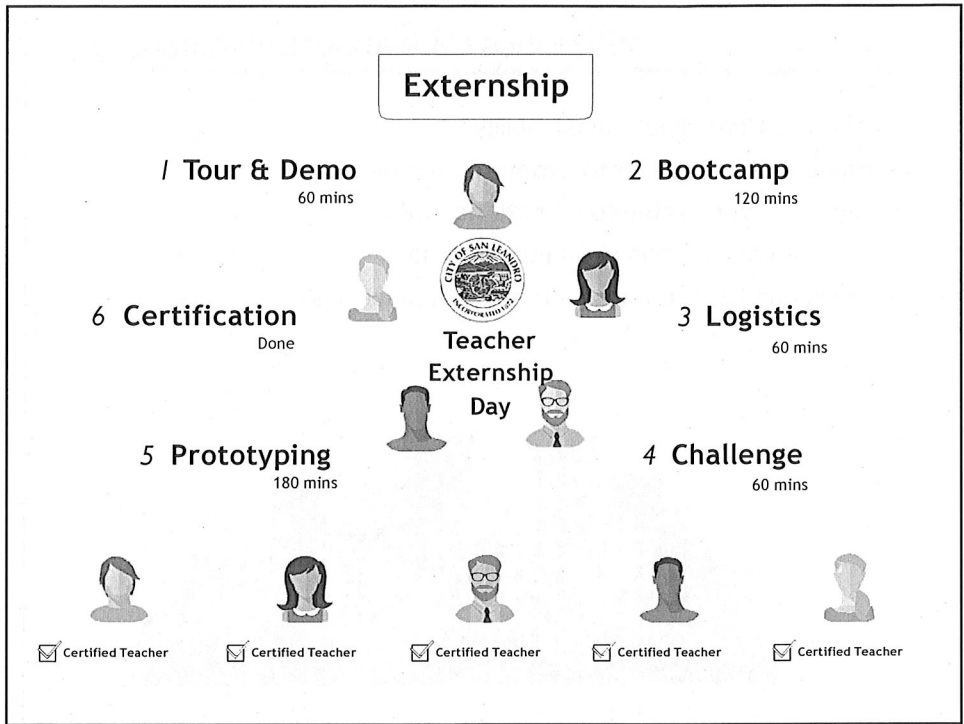
Company Advisor: Daniela King
Position: Civic Space, Friends
Advisor Email: king2020@earthlink.net

GET STARTED FOLDER [click to download the folder](#)

Logo
Organization name logo

Checklist
Project checklist and milestones list to keep follow on track

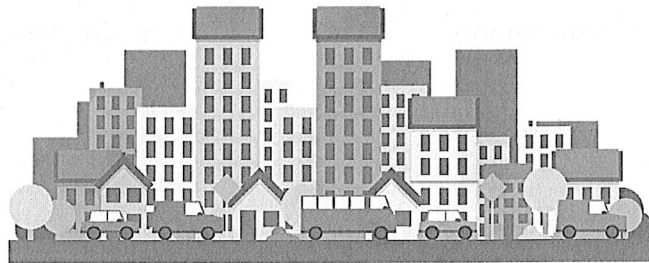


Why Cities Care about Sustainability

Why Cities Care about Sustainability

- » Cities have the **power to promote change**
- » Cities are **vulnerable to climate hazards**
- » Climate change causes **financial damage**
- » Cities need to **accommodate growth** (especially California)

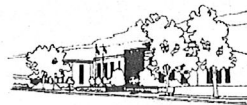
C40.org



Why San Leandro Cares about Sustainability

City Council Goals

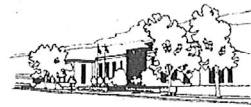
- » Place San Leandro on a firm foundation for **long-term fiscal sustainability**
- » Advance projects and programs promoting **sustainable economic development**, including transforming San Leandro into a center for innovation
- » Provide quality public safety service and grow our partnership with the community to **keep San Leandro safe**
- » **Maintain and enhance** San Leandro's **infrastructure**
- » Support and implement programs, activities and strengthen communication that enhances the **quality of life and wellness**, celebrates the arts and diversity and promotes civic pride
- » Maintain and support a **strong positive relationship between the City, schools, and the educational community.**



Why San Leandro Cares about Sustainability

City Council Goals

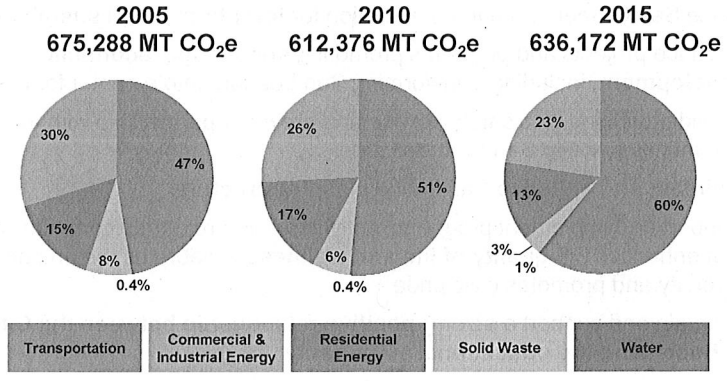
- » Place San Leandro on a firm foundation for **long-term fiscal sustainability**
- » Advance projects and programs promoting **sustainable economic development**, including transforming San Leandro into a center for innovation
- » Provide quality public safety service and grow our partnership with the community to **keep San Leandro safe**
- » **Maintain and enhance** San Leandro's **infrastructure**
- » Support and implement programs, activities and strengthen communication that enhances the **quality of life and wellness**, celebrates the arts and diversity and promotes civic pride
- » Maintain and support a **strong positive relationship between the City, schools, and the educational community.**



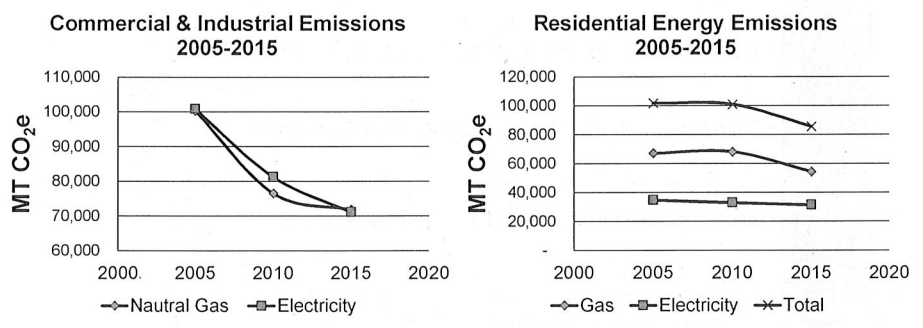
Sustainability in San Leandro

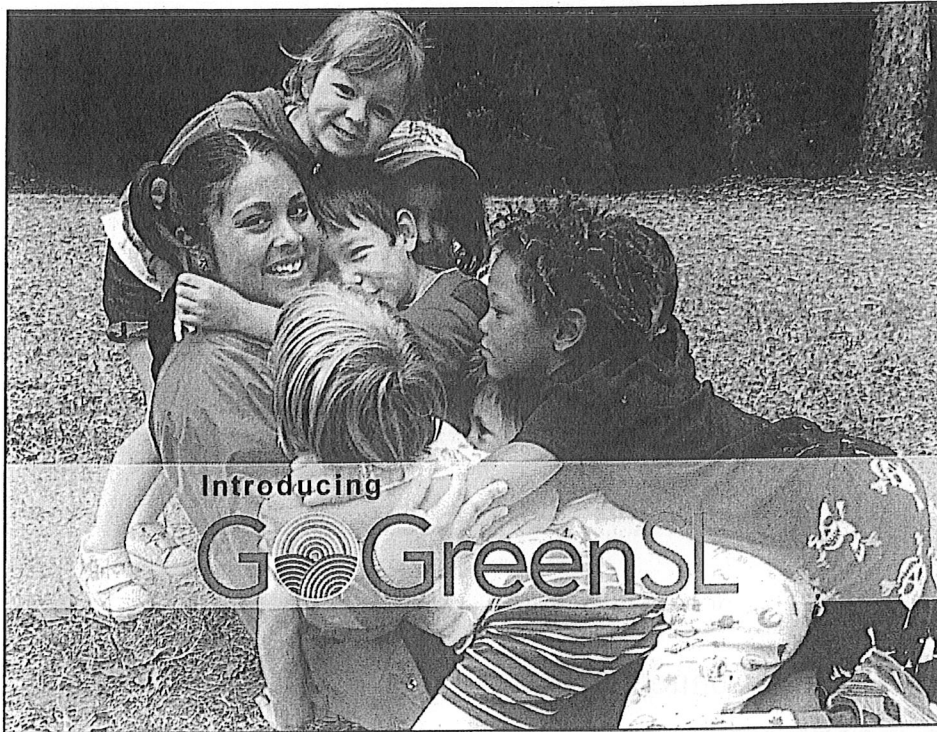
2007	<ul style="list-style-type: none">• 2005 Inventory Reported• GHG reduction goal set: 25% below 2005 by 2020
2009	<ul style="list-style-type: none">• Climate Action Plan (CAP) adopted by City Council
2013	<ul style="list-style-type: none">• City Council Update on 2010 GHG Emissions Inventory
2016	<ul style="list-style-type: none">• CAP goals incorporated into San Leandro General Plan• Sustainability function staffed
2017	<ul style="list-style-type: none">• San Leandro completes 2015 GHG Emissions inventory and Climate Hazards Assessment
2018	<ul style="list-style-type: none">• GoGreenSL launches to encourage climate-friendly actions• Resilient San Leandro builds momentum toward community resilience

San Leandro Community GHG Emissions Inventories



San Leandro Emissions Trends





Introducing
GoGreenSL

GoGreenSL
How It Works > Actions & Impact > Log In
GET STARTED

Join the GoGreenSL Challenge. Change the Future

PROGRESS
158 Homes

250

HOUSING UNITS BY DECEMBER 2019
PARTICIPATION GOAL

PROGRESS
1%

500

TONS OF CO₂ BY DECEMBER 2019
REDUCTION GOAL

FOR COMMUNITY GROUPS
No community groups have points yet.

TOP TEAM
Solar Squad

[See Challenge Leaderboard >](#)

Getting Started on GoGreenSL

————— How It Works —————

Challenge Leaderboard



250

HOUSEHOLDS BY DECEMBER 2016 PARTICIPATION GOAL



500

TONS OF CO₂ BY DECEMBER 2016 REDUCTION GOAL

TOP COMMUNITY GROUP
TOP TEAM
Solar Squad

Community Challenge Stats



5

ACTIONS COMPLETED



24

ACTIONS COMMITTED



32

ACTIONS PREVIOUSLY COMPLETED

Most Recent Actions

- Recycle & Compost
- Switch to CFLs or LEDs
- Install Electric Heat Pump Water Heater
- Offset Air Travel
- Install Smart Power Strips



198

HOUSEHOLDS PARTICIPATING



252

DOLLARS SAVED



3

TONS CO₂ REDUCED



517

KWH SAVED



0

GALLONS SAVED



138

THERMS SAVED



0

WATER SAVED

Competing and Connecting

Measuring Household Impact

My Plan

FIND ACTIONS

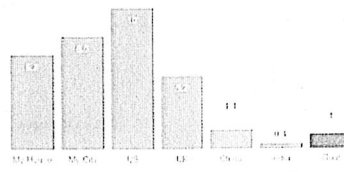
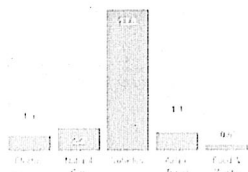
BIG ACTIONS

JOHNSON'S PLAN

My Baseline

My Household Impact 20.1

Average Impact Per Person 6.7



Questions

Sally Barros

Sustainability Manager, City of San Leandro
sbarros@sanleandro.org
510-577-3421

Delaney King

AmeriCorps CivicSpark Fellow
dking@civicspark.lgc.org

Derick Lee

Pilot City
dericklee@pilotcity.com



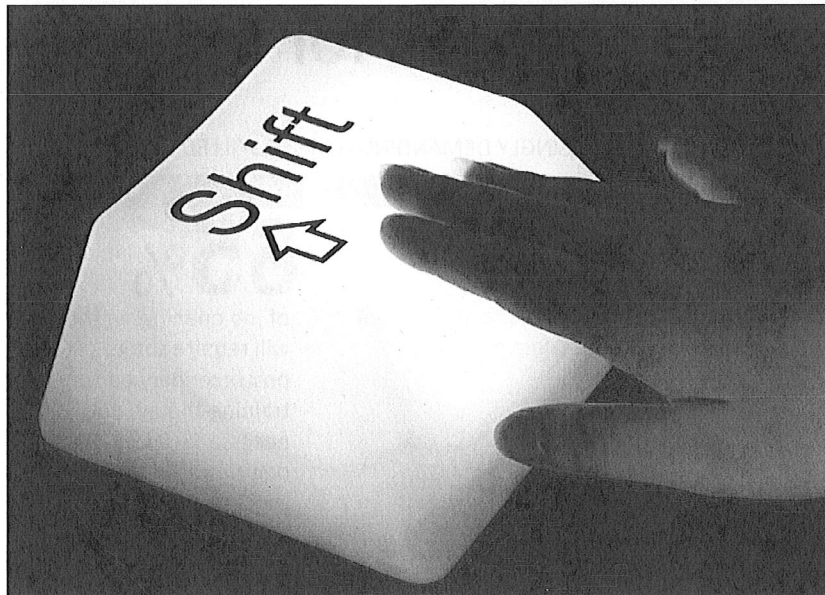


Careerforce Development

Presentation By

San Leandro Unified School District

City Council Joint Work Session Meeting
April 23, 2018





Landscape changes in education

- New Standards CCSS and NGSS
- Career Pathway (CPT) Grants
- College and Career Indicator (CA Dashboard State Indicator)
- Project Based Learning for SLUSD



Landscape changes for industry

THE LABOR MARKET IS INCREASINGLY DEMANDING A MORE SKILLED WORKFORCE.

IN THE 1970s

28%

of jobs required more than a high school education.

IN 1992

56%

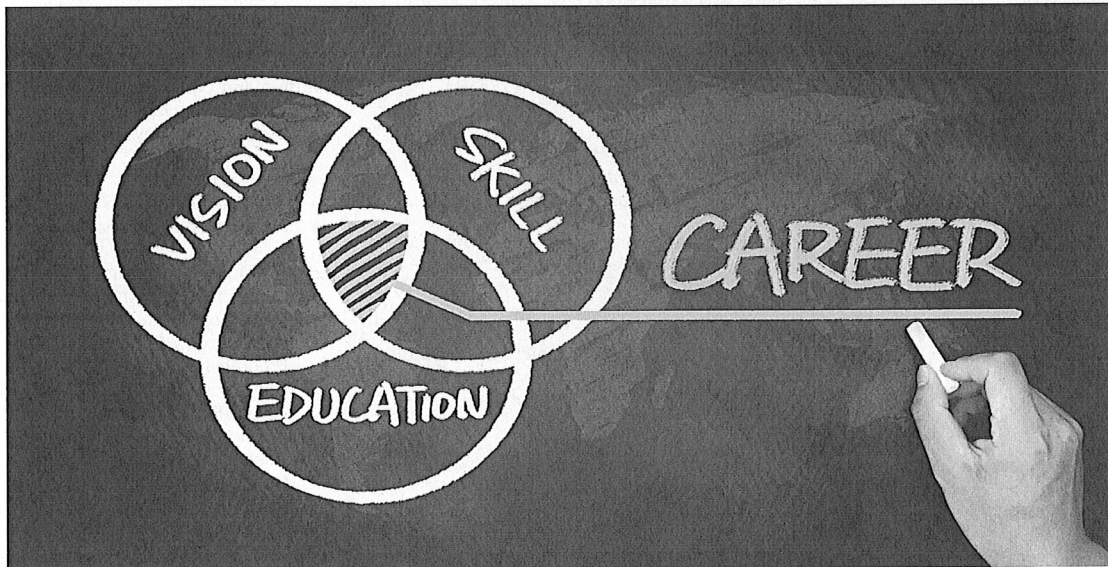
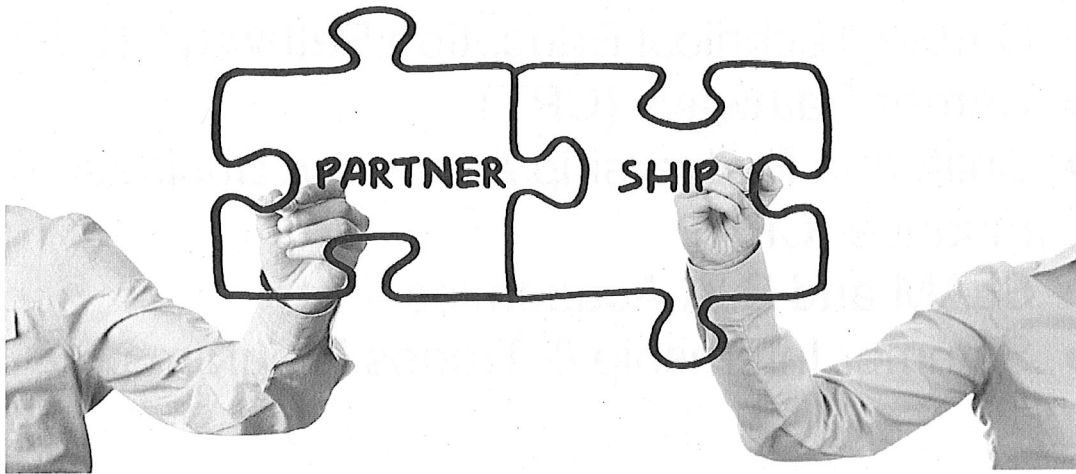
of jobs required more training.

BY 2020

65%

of job openings in the U.S. will require some postsecondary education or training-though not necessarily a four-year degree.

Source: Georgetown Center on Education and the Workforce analysis





Current Programs in SLUSD

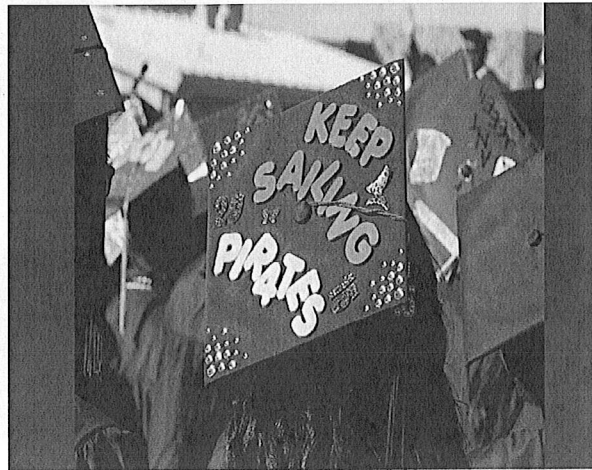
- Career Technical Education Pathways (CTE)
- Career Pathways (CPT)
- California Partnership Academy: Business & Finance (CPA)
- SLAM and SJA Academies
- Summer Internship & Trades Programs

Academies	Career Pathways	Career Technical Education Pathways
<p>Academy for Multimedia (SLAM)</p> <ul style="list-style-type: none"> ● Multimedia 10th ● Video Production 11th ● Advanced Multimedia 12th <p>Academy for Business and Finance (BAF)</p> <ul style="list-style-type: none"> ● Entrepreneurship: Business Ownership 10th ● Marketing Econ 11th ● Bus Econ & Fin 12th <p>The Social Justice Academy(SJA)</p> <ul style="list-style-type: none"> ● Social Justice 1 10th ● Social Justice Activism 11th ● Social Justice Quest 12th 	<p>Digital Media Pathway</p> <ul style="list-style-type: none"> ● Graphic Arts ● Studio 2d Design ● Video Production <p>Biomedical Health Pathway</p> <ul style="list-style-type: none"> ● Medical Chemistry ● Anatomy And Physiology ● Forensic Biology ● Sports Medicine ● Genetics/Biotechnology <p>Advanced Manufacturing Pathway (CTE)</p> <ul style="list-style-type: none"> ● Machine Technology 1 ● Metal 2 ● CAD Solid Modeling <p>Information Communication Technology Pathway</p> <ul style="list-style-type: none"> ● Introduction To Computer Science ● AP Computer Science Principles ● AP Computer Science A <p>Public Service and Law Pathway</p> <ul style="list-style-type: none"> ● Currently under development for class of 2022 	<p>Arts, Media & Entertainment</p> <ul style="list-style-type: none"> ● Graphic Arts ● Publications/Yearbook <p>Building and Construction Trades</p> <ul style="list-style-type: none"> ● Wood Technology I ● Wood Technology II <p>Transportation</p> <ul style="list-style-type: none"> ● Auto Mechanics ● Advanced Auto Mechanics <p>Eden Regional Occupational Program:</p> <ul style="list-style-type: none"> ● Automotive Refinishing, Automotive Technology, Careers in Education, Cybersecurity/Computer Programming, Construction, Technology, Criminal Justice/Forensic Science, Culinary Science, Dental Assisting, First Responder, Medical Careers, Merchandising occupations, Web Graphics and Digital Design, Welding Technology and Metal Fabrication



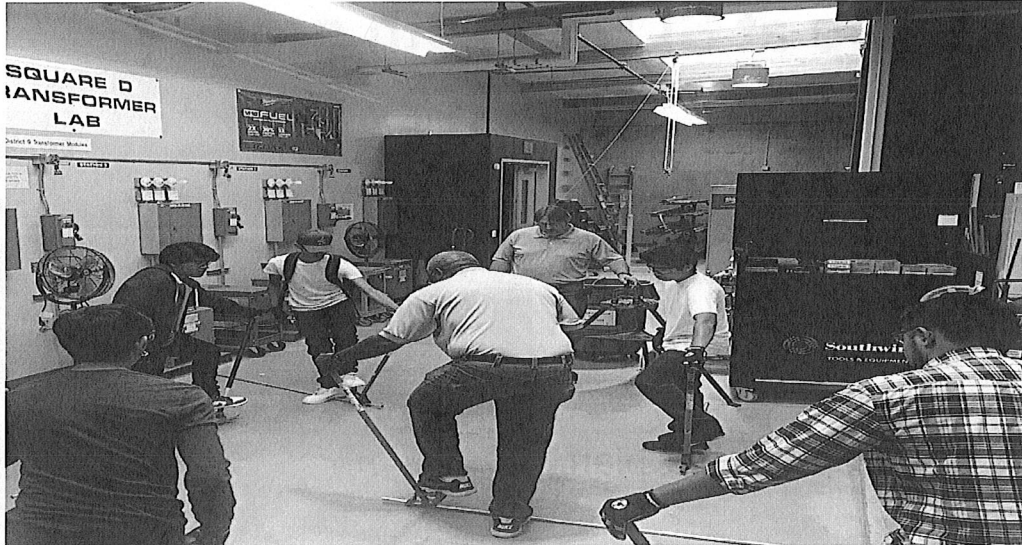
First step at SLHS in 9th grade

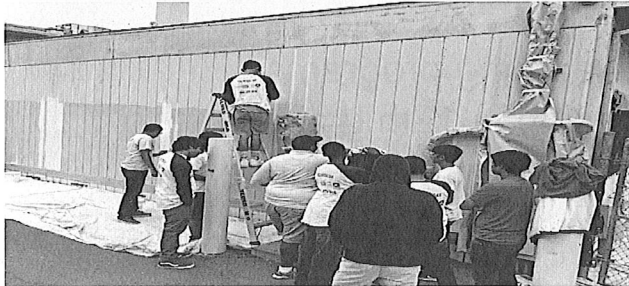
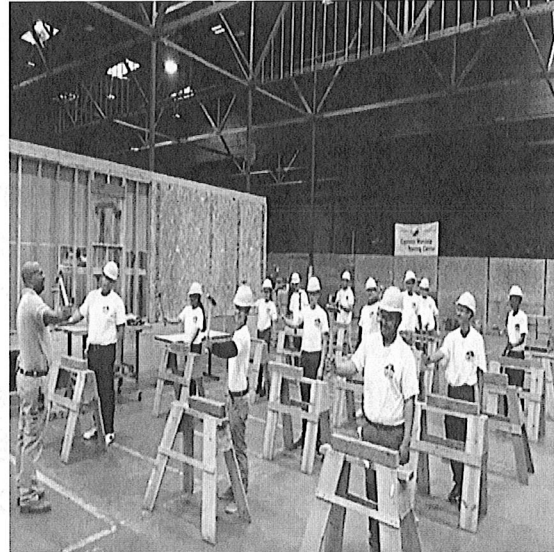
- Enroll in the College and Career Seminar course
 - A-G approved
 - Dual Enrollment Credit
 - Develop 10 year plan



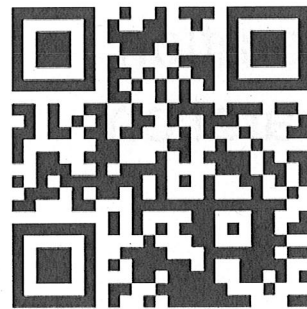
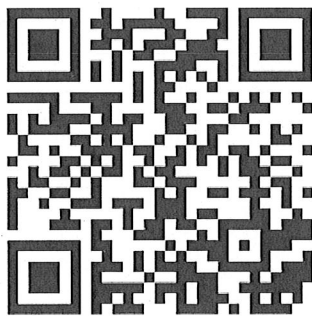
Highlights of our Career Programs

- Advanced Manufacturing Day
- Chabot College and Cal State East Bay career program events
- Local Pathway Action Team (LPATs) Meetings and Events
- City of San Leandro Chamber of Commerce Partnership
- Sustainable Industry Partnerships
- Dual Enrollment Early College Credit
- Academy leadership and competition programs
- Summer Internship placements
- Girls Who Code, OSIssoft, San Leandro Hospital, Rising Sun Energy, First United Credit Union Workshop
- City of San Leandro
- Facebook
- Magnitude.io, Pilot City
- Summer Trades Program with Cypress Mandela and Net Zero
- Hayward, Castro Valley, San Leandro Unified and San Lorenzo Unified "Dream Team" meetings





Summer internship videos





Goals and Desired Outcomes

- Offer rigorous courses that combine academic content and applied career oriented learning
- Offer programs that align with post secondary education or apprenticeships with options for students to earn dual enrollment credit
- Institutionalize work based learning programs
- Capstone course and internship in 12th grade
- Completed 10 year education/career plan for seniors



Building our work based learning programs

- Awareness
- Exploration
- Preparation



Work based learning data

	2014-15	2015-16	2016-17	2017-18*	Total
Field Trips	137	951	304	194	1,586
Guest Speakers	563	1,712	1,498	1,115	4,888
Job Shadow	9	299	623	234	1,165
Internships	19	50	31	11	111
Mock Interviews	66	198	0	20	284
CTSO's	122	219	496	315	1,152
Other	56	1,131	367	78	1,632
Total	972	4,560	3,319	1,967	10,818



Challenges

- Access to training and internships programs during and after the school day
- Policies to increase dual enrollment options for students during the school day
- Recruit and hire CTE credentialed teachers and look into supporting programs that will provide current teachers an opportunity to receive a CTE credential
- Develop a sustainable system of ongoing work based learning events embedded in courses
- Continue to develop professional development opportunities for teachers to connect with industry to ensure program relevancy and alignment
- High school master schedules



Next steps

- Continue to develop links and programs between community colleges, business and industry, and workforce development partners to align programs for students
- Create a sustained recruitment and outreach plan to connect students to the career oriented programs offered at SLUSD



Thank You!

Any Questions?



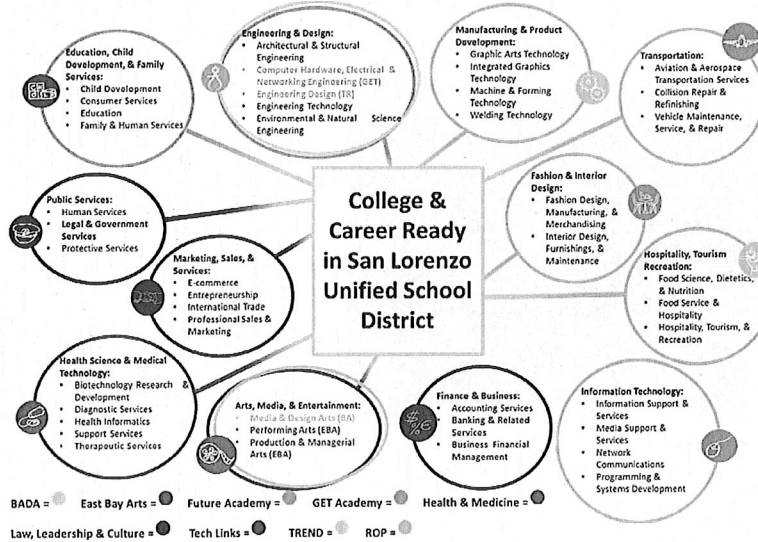
Workforce Development

Work-based Learning in SLzUSD

In San Lorenzo USD . . .

- We believe in College and Career readiness and Community engagement.
- To that end we have embedded into our Mission & Vision, Goals, and our Graduate Profile explicit wording to maintain our focus.
- And all of our high school students attend a small learning community with a career focus.

SLzUSD - Current Structure



Current (but ending soon) Grant Work

San Lorenzo Unified School District Wins

- Partnership with Alameda County WIB for employer engagement (work-based learning, including internships)
- Work-based learning specialist 0.5 FTE
- Building Project Lead the Way Computer Engineering Pathway @ SLZHS
- Building Project Lead the Way Biomedical Pathway @ AHS
- Law, Leadership & Culture incorporates Criminal Justice through Eden Area ROP @ SLZHS
- Development of Career Technical Education (CTE) integrated math and English (a-g + CTE) in Engineering, IT, Public Service, Health)
- Improved Placement through Multiple Measures for students entering Chabot
- Cross-training between high school and community college counselors re: CTE and matriculation
- Development of Graduate Profile

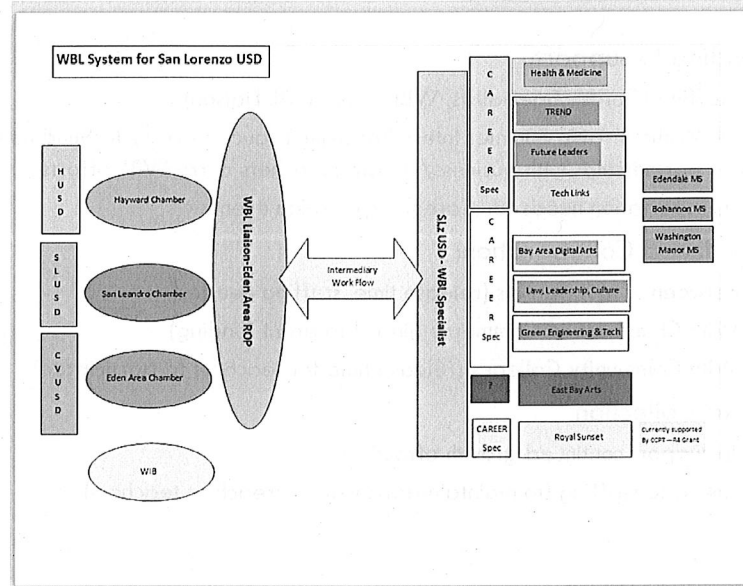
EAST BAY CAREER PATHWAYS (CCPT)



East Bay Career Pathways Short-Term Goals:

- Build and / or strengthen industry-aligned pathways for improved graduation, post-secondary, and employment success
 - Integrated English & math into high school pathways for improved outcomes in high school and college
 - Increase work-based learning opportunities by 50% (coordinate employer engagement)

Current Work-based Learning System



SLzUSD Successes – 2014 to 2018

- ✓ Increased partnerships with local Community Colleges
 - ✓ Yearly Career Exploration Events (at Chabot College)
 - ✓ Counseling Collaborative (with Chabot College)
 - ✓ LPATs (Local Pathway Action Teams)
- ✓ Partnerships with 3 area Chambers of Commerce
 - ✓ Increased Business/Industry connections and partnership
- ✓ Collaboration between partner School Districts (HUSD, CVUSD, SLUSD)
 - ✓ LPATs (Biomedical, Engineering/Adv. Manufacturing, ICT/Digital Media, Law/Public Service – coordinated by Chabot College)
- ✓ Well established Summer Intern Program
 - ✓ Working with OS/soft, EBMUD, Faces, Bridge to Future and various partners in area
 - ✓ Yearly improvement in program to support sustainability
- ✓ Pilot City Partnership
 - ✓ Engages teachers in WBL and leads to externships for teachers, internships for students
- ✓ Staffing to support the work
 - ✓ WBL Specialist + WBL Liaison work in partnership to provide WBL sites
 - ✓ 2.5 Career Specialists (San Lorenzo, Arroyo, Royal Sunset High Schools)
- ✓ Included College & Career Readiness in Graduate Profile
 - ✓ Teacher education, Professional Development Days

SLzUSD Challenges – Looking to the Future

- **Funding to support:**
 - Staffing (Career Specialists, WBL Spec, WBL Liaison)
 - Without = No Summer Intern Program, reduced ability to build new partnerships with business/industry, teachers carry WBL efforts
 - Transportation needs for Career Exploration events
- **Continued Collaboration:**
 - Between school districts (release time, staffing needed)
 - With Chambers of Commerce (linked to grant funding)
 - With Community Colleges (release time for teachers to participate)
- **Data Collection**
 - To support continued growth effectively
 - Linked to staffing (to maintain database, outreach to teachers)

Desired Outcomes/Next Steps

- ❖ **Career Readiness for ALL students**
 - ❖ Currently mostly touches the elective/career pathway courses (CPA model)
 - ❖ Need to increase WBL opportunities/capacity
 - ❖ Use Graduate Profile to build rubrics for benchmark points
 - ❖ Will need to continue teacher outreach and education
 - ❖ Efforts may touch on other areas such as master schedule, staffing
- ❖ **Continue to grow the Summer Intern Program**
 - ❖ Goal is 10 students from each SLC
 - ❖ Will need to increase business/industry partnerships
- ❖ **Continue partnerships and collaborations with districts, cities, and chambers**

Needs to continue growth

- Share resources and opportunities
 - Being unincorporated brings challenges around shared resources
- Continue collaboration with current structure, if possible
- Maintain support from San Leandro Chamber (through the WBL Liaison)
- Continue to explore sustainability options together

